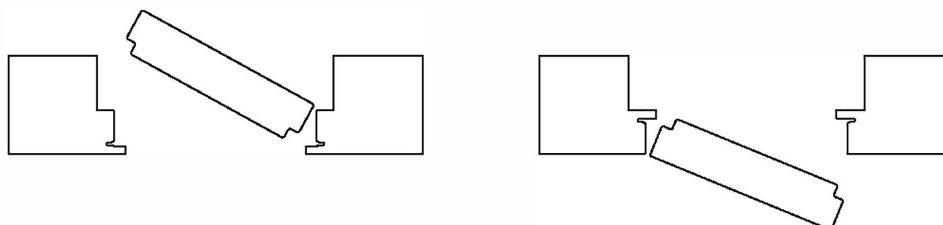


ULTRA FLUSH HINGED FRAME ASSEMBLY

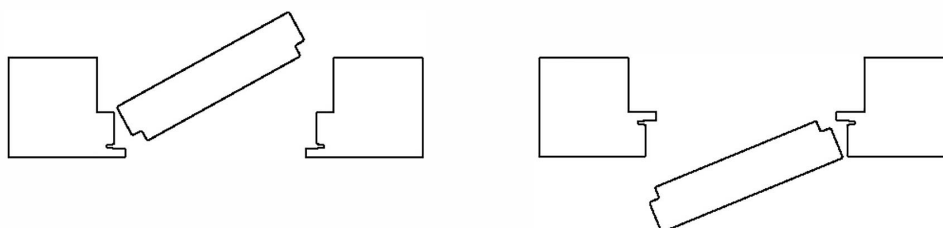
PUSH RIGHT / PULL LEFT

Go to page 3

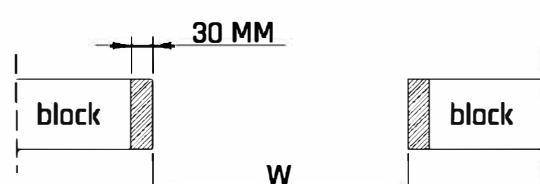


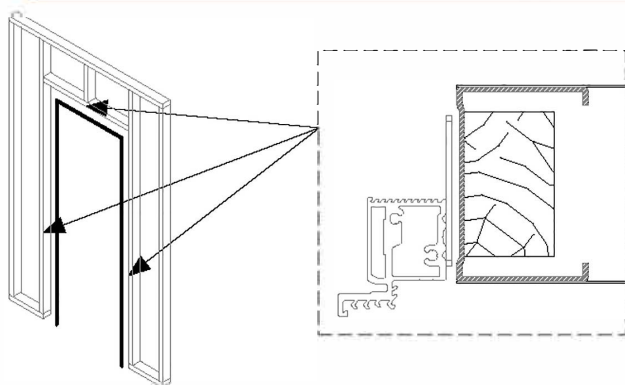
PUSH LEFT / PULL RIGHT

Go to page 4



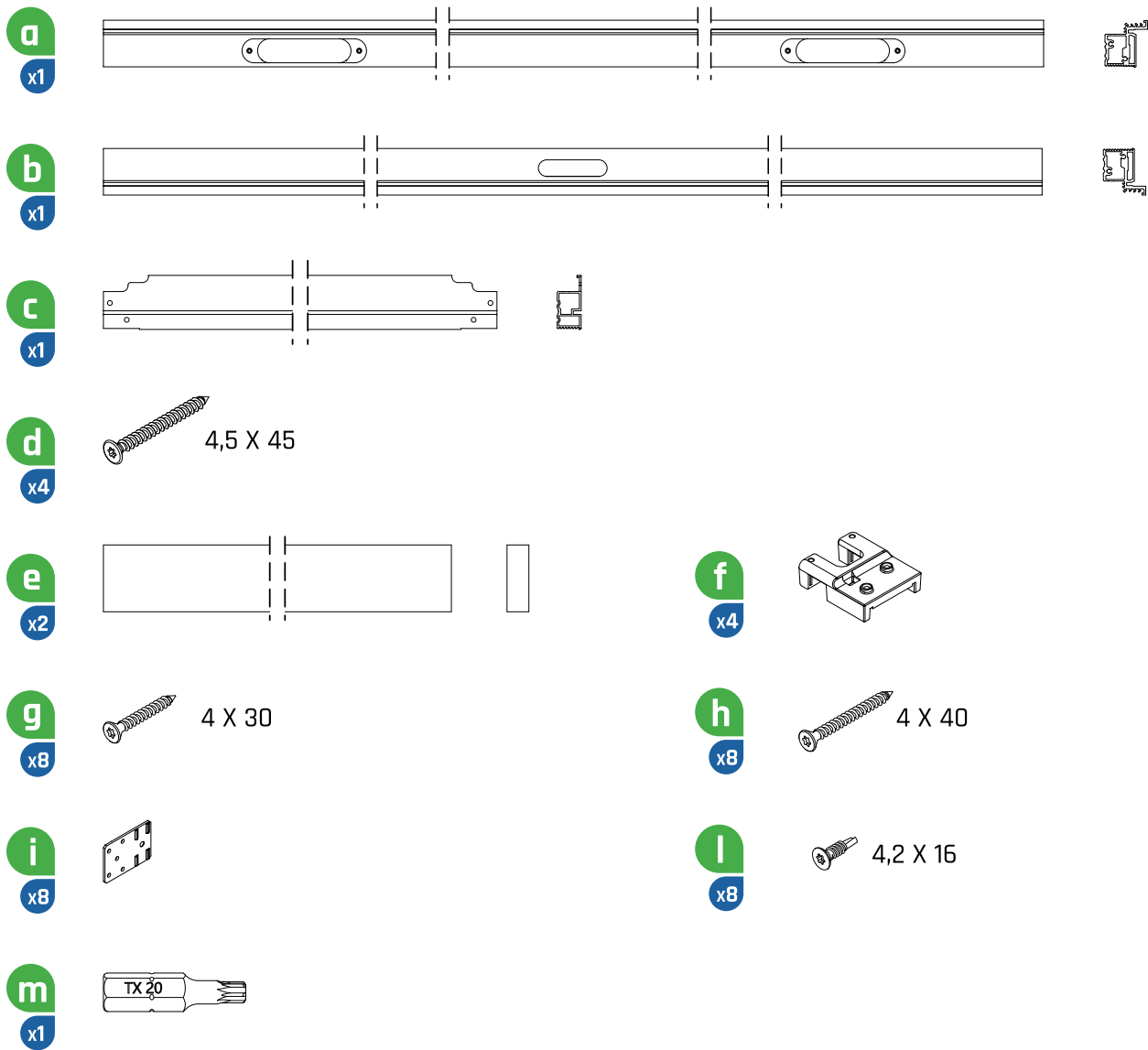
Check components list on page 2

TIMBER AND STEEL STUD				MASONRY WALL
DW	DH	W	H	<p>TO INSTALL IN MASONRY WALL ADD A 30 MM TIMBER AROUND THE OPENING</p> 
610	1981	684	2011	
686	1981	760	2011	
762	1981	836	2011	
838	1981	912	2011	
726	2040	800	2070	
826	2040	900	2070	
926	2040	1000	2070	
				Suitable for 44 mm doors

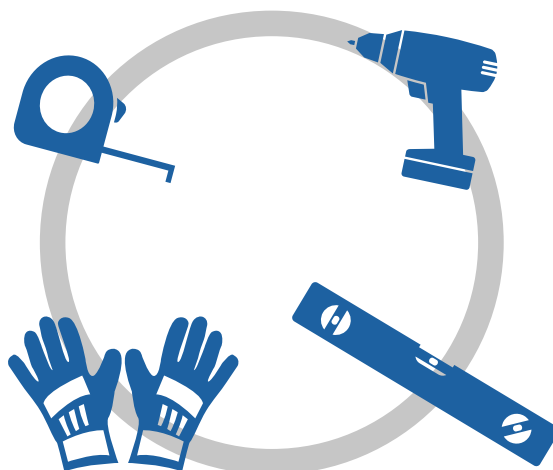


ATTENTION:
When using metal stud, reinforce the studwork by adding timber

COMPONENTS



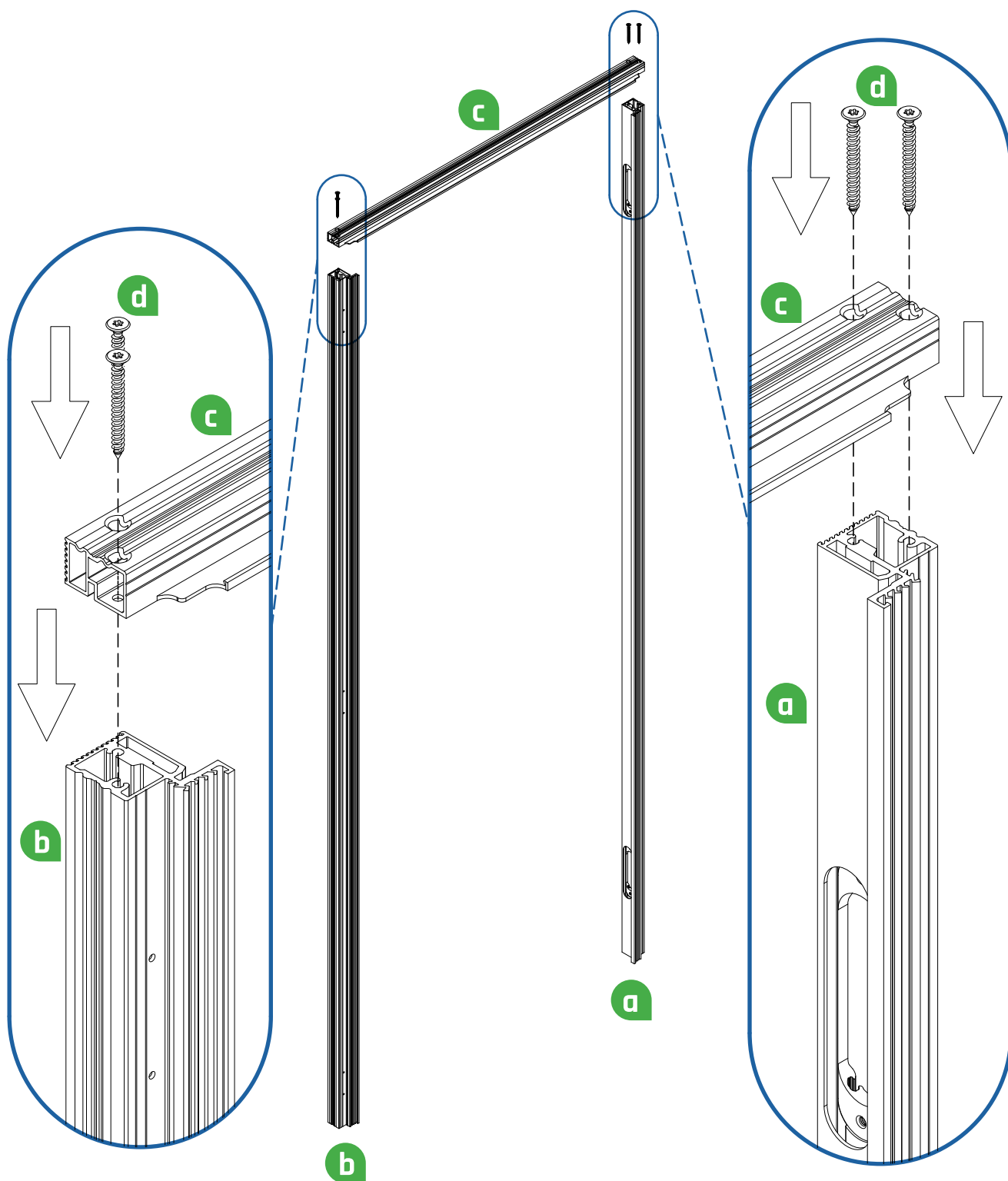
TOOLS REQUIRED



If you follow carefully these instructions for the assembly and installation process your life will be easier! A pair of tressles are very useful when assembling the frames. Some parts may have sharp edges so use gloves and be careful when handling the parts. All Rocket Door frames products are fully inspected and tested before they leave the factory.

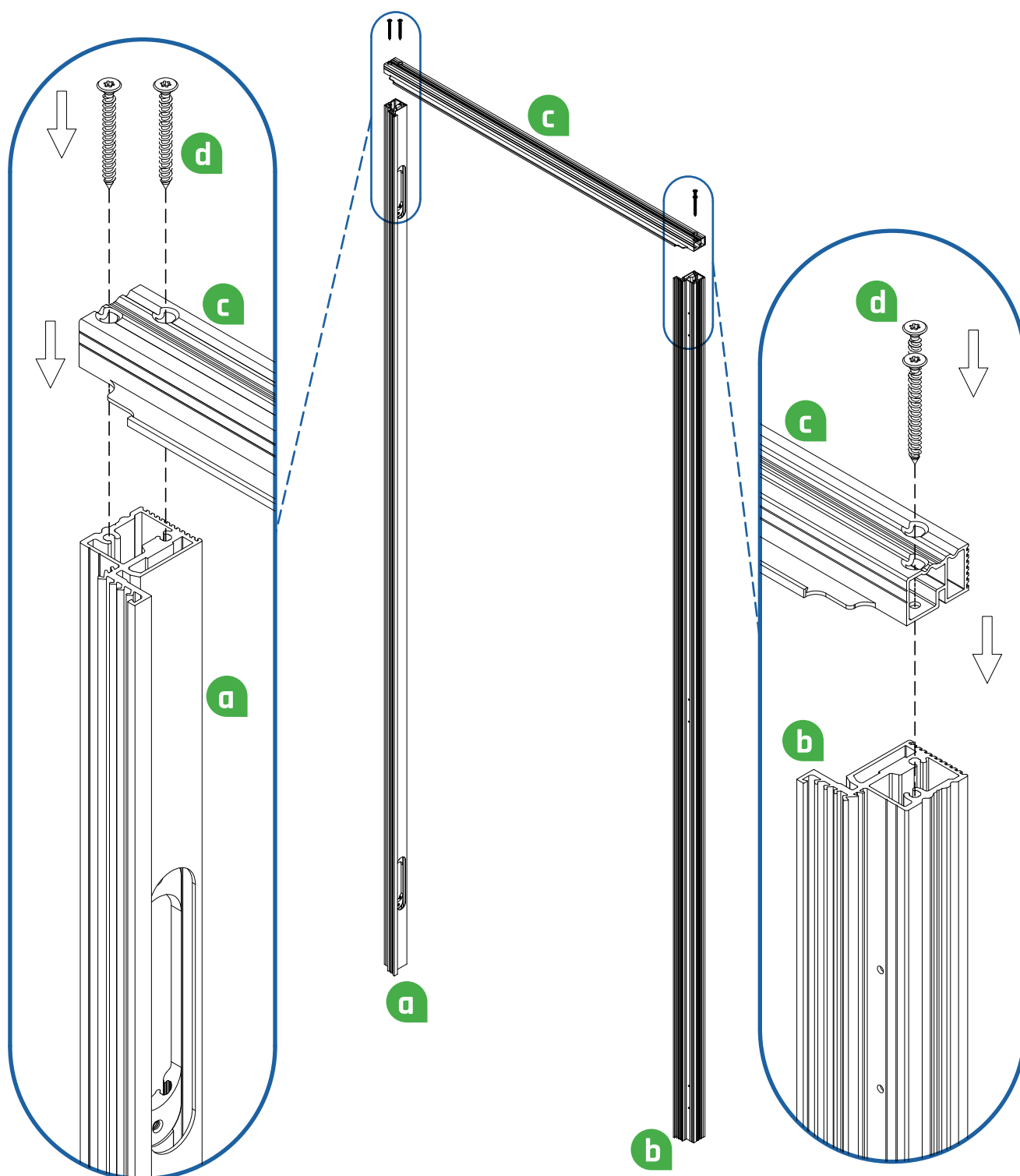
Join the two verticals (a+b) with the horizontal (c), taking note of where the hinge cut out are positioned like shown below. Use the supplied screw bit (m) to fix the screws (d) into the top of (c)

PUSH RIGHT / PULL LEFT

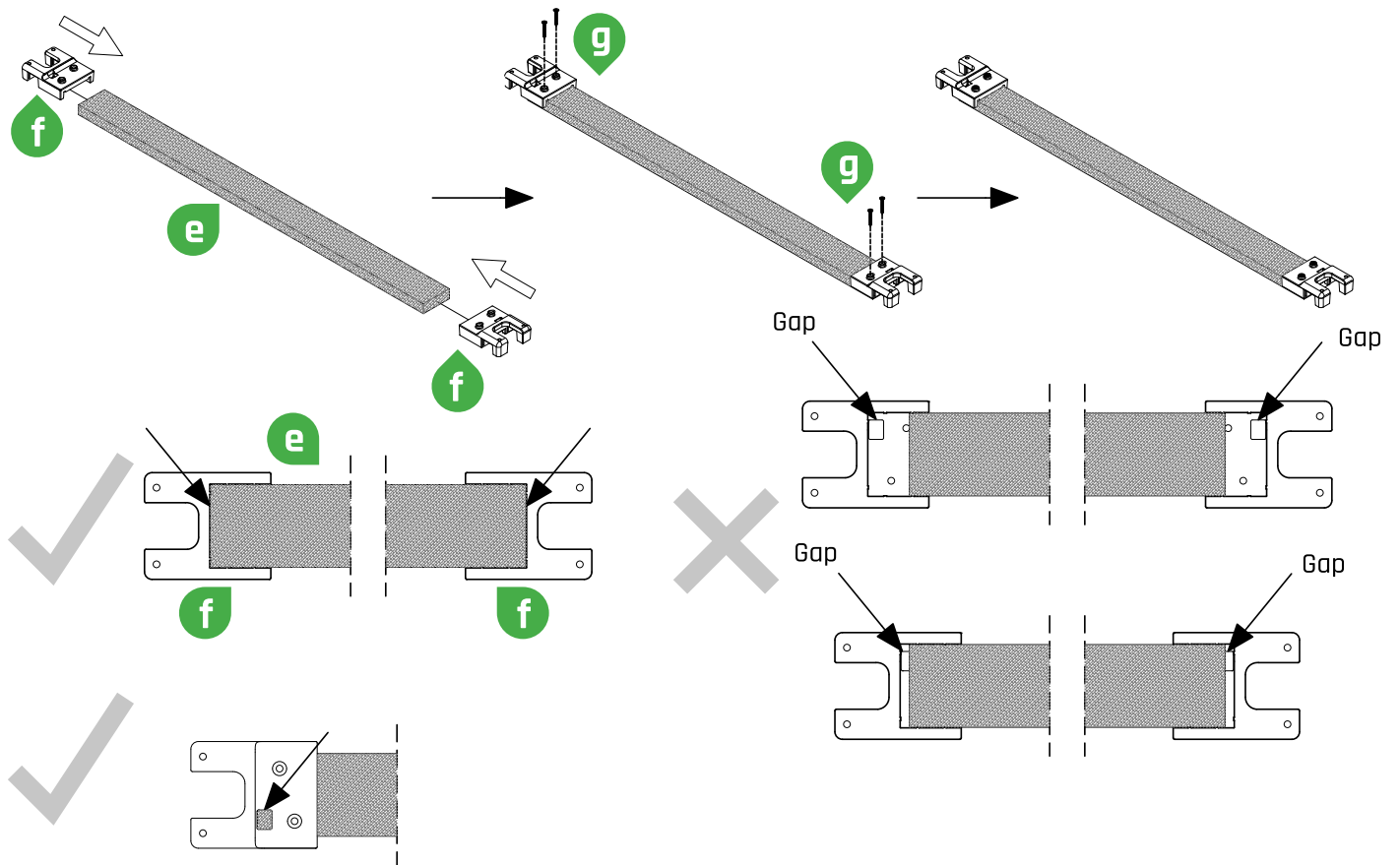


Join the two verticals (a+b) with the horizontal (c), taking note of where the hinge cut out are positioned like shown below. Use the supplied screw bit (m) to fix the screws (d) into the top of (c)

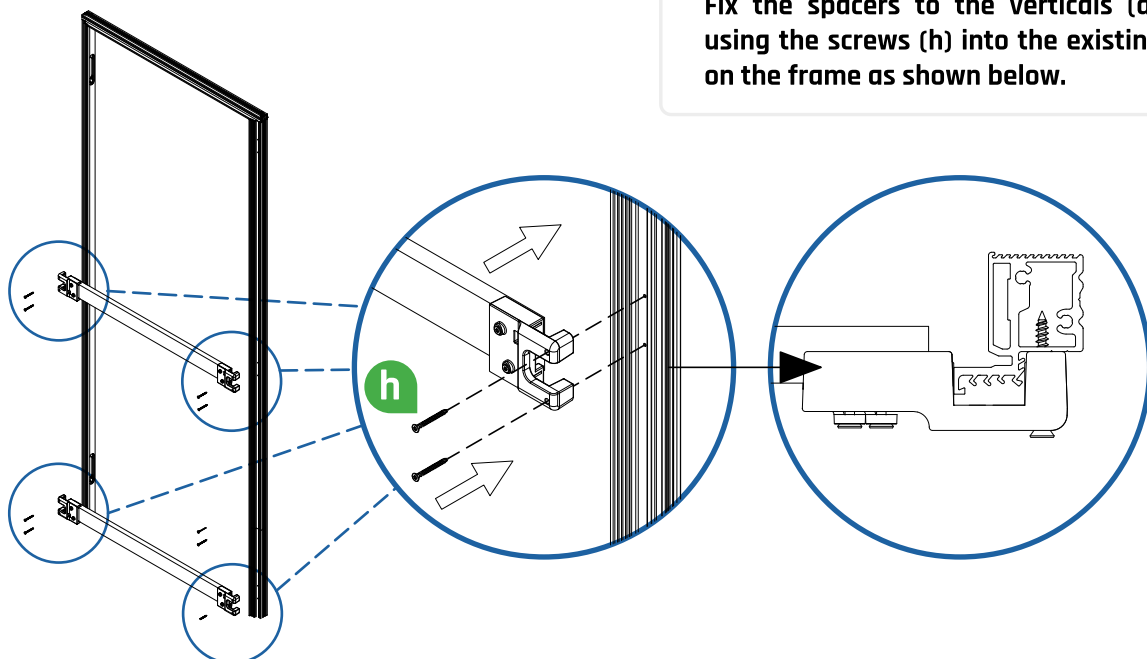
PUSH LEFT / PULL RIGHT



Join the spacers by inserting the wooden part (e) fully into the two ends (f), taking care there are no gaps.
Use the supplied screw bit (m) to attach the screws (g)

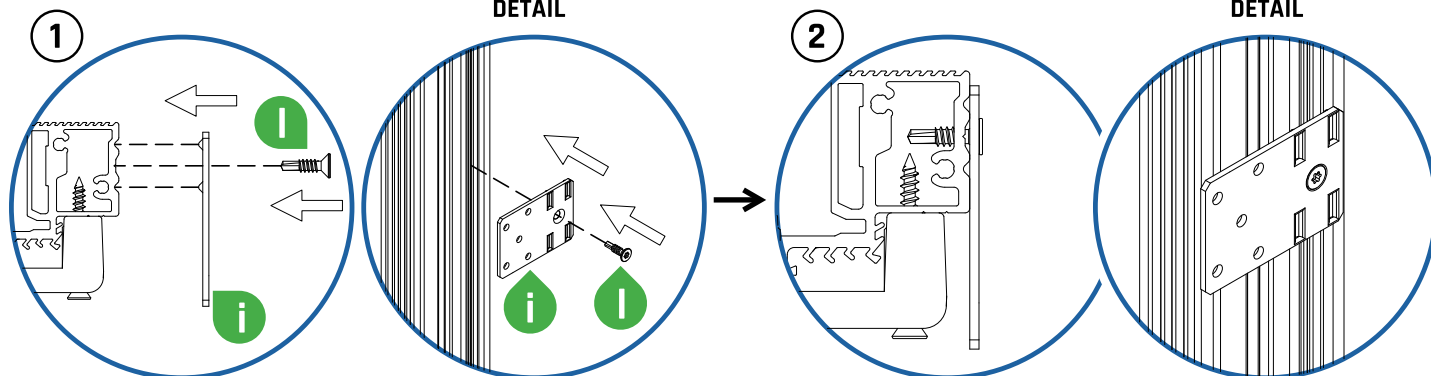
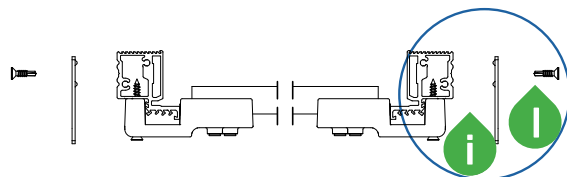


Fix the spacers to the verticals (a+b) by using the screws (h) into the existing holes on the frame as shown below.

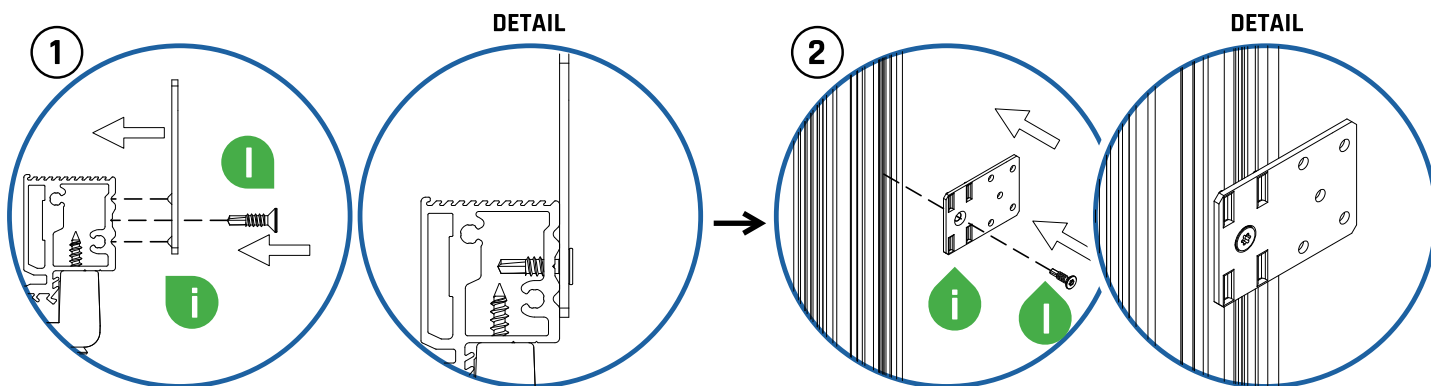
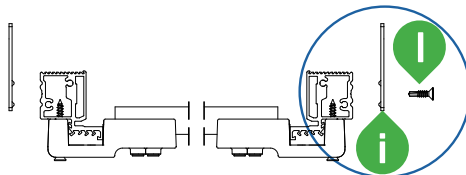


Attach the joining brackets (i) to the verticals (a+b) using the supplied self tapping screws (l). Brackets (i) should be equally spaced.

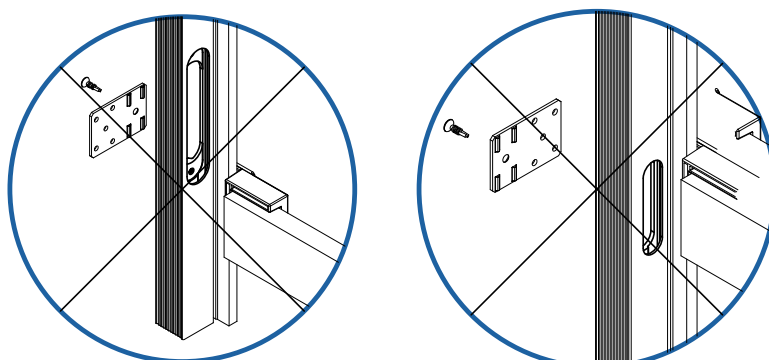
PULL



PUSH

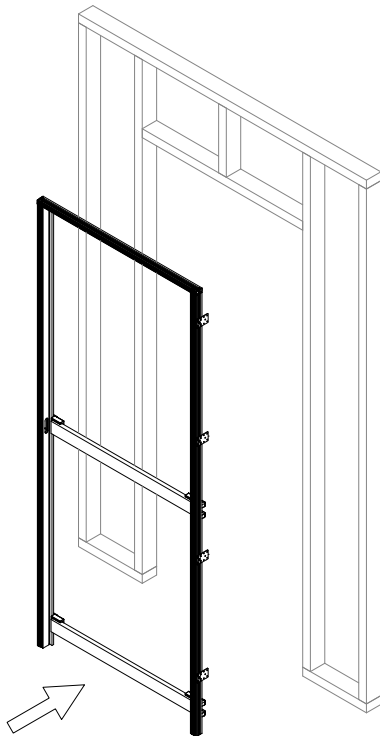


ATTENTION: do not position the brackets (i) at the hinges height

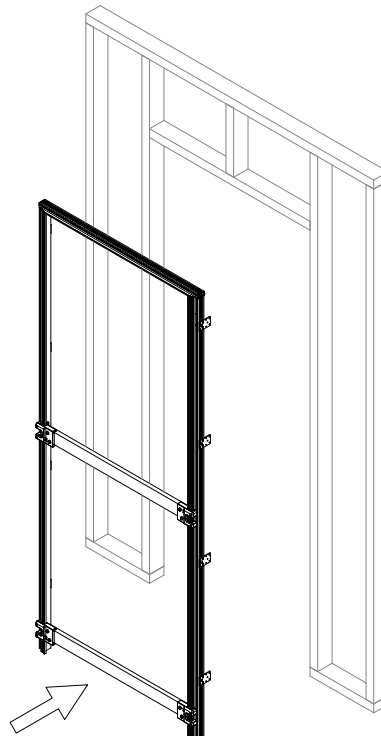


Place the frame into the studwork based on the choosen opening (push or pull).

PULL

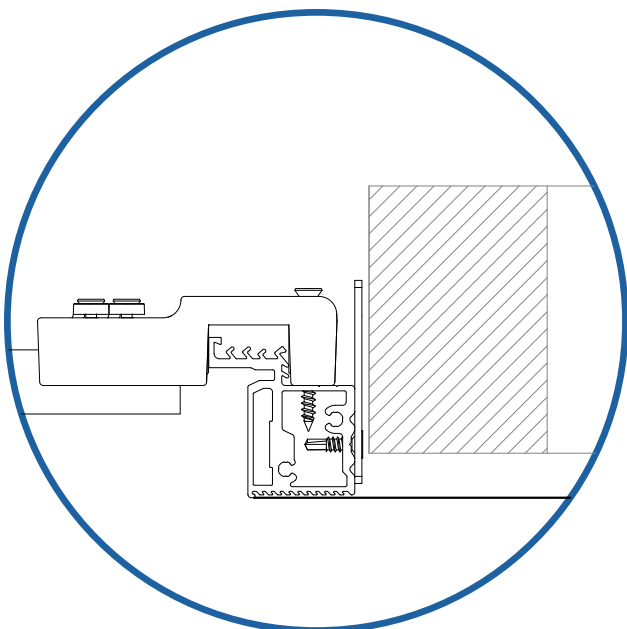


PUSH

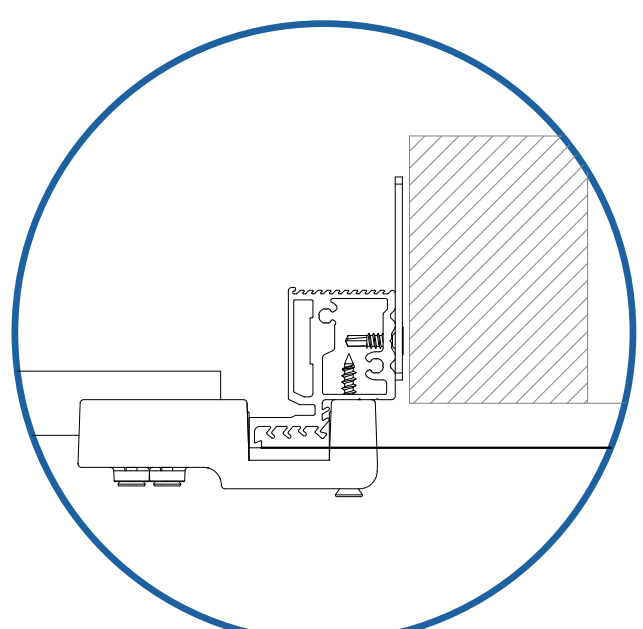


ATTENTION: make sure the frame is installed flush with the FINISHED wall level (including plasterboard)

PULL

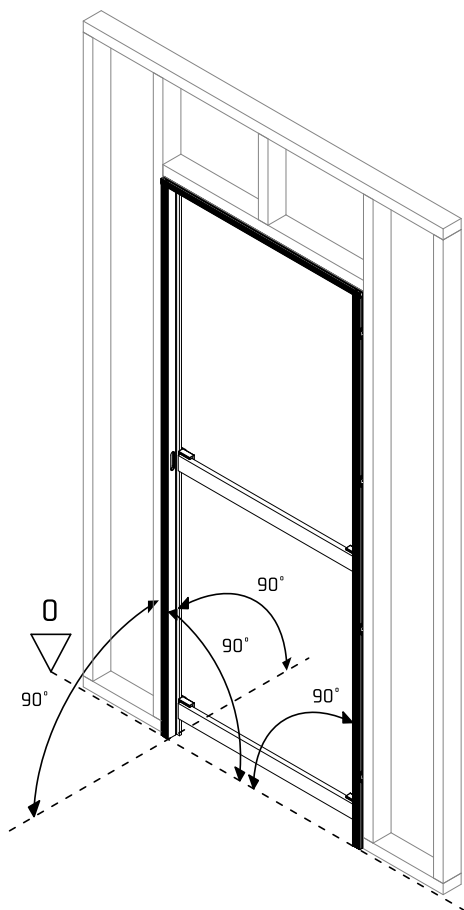


PUSH

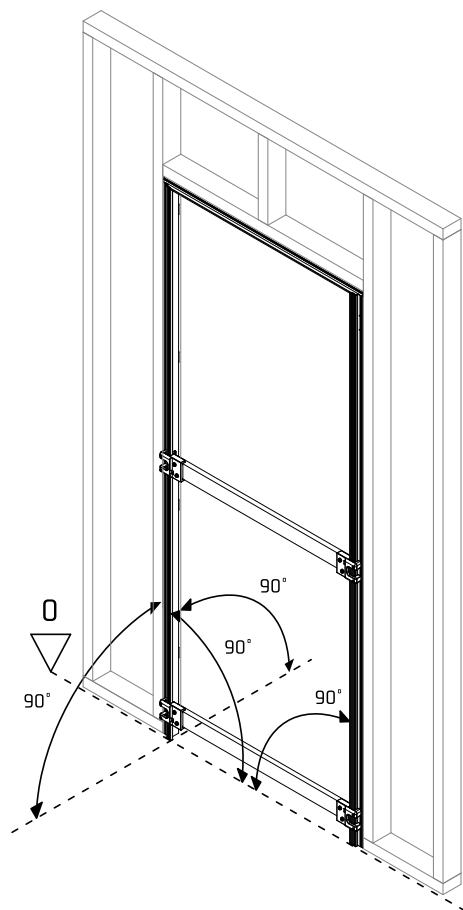


Make sure the frame is level and plumb and fix it to the studwork using brackets (i)

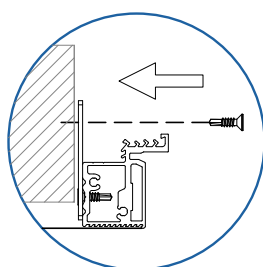
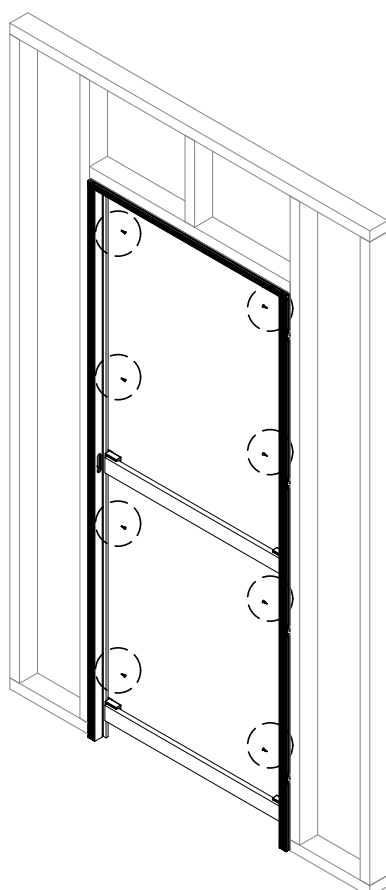
PULL



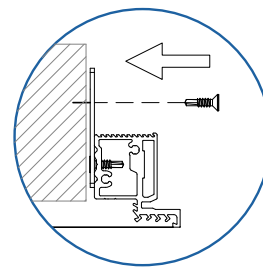
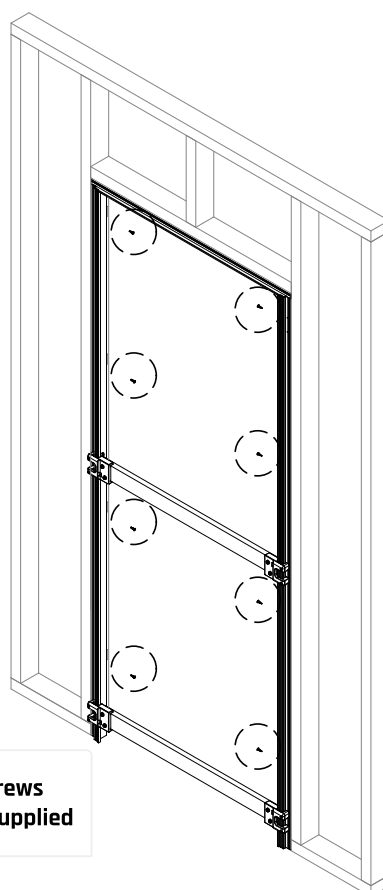
PUSH



PULL



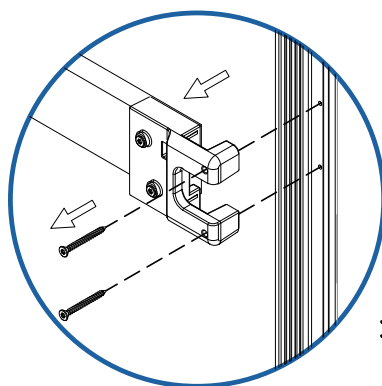
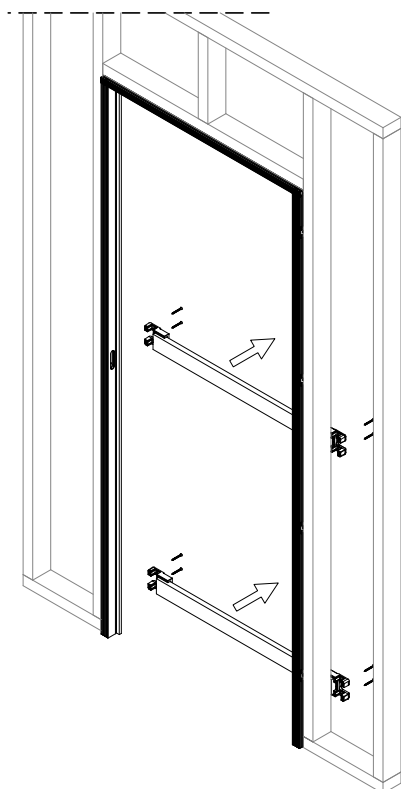
PUSH



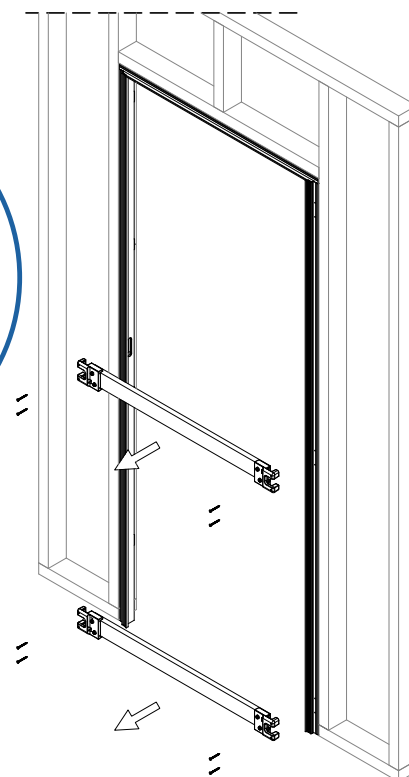
Fixing screws
are not supplied

Once the frame is fixed, take off the spacers using the supplied screw bit (m)

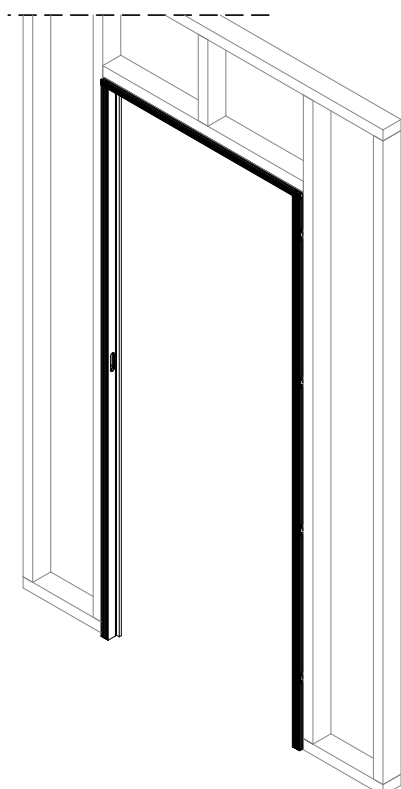
PULL



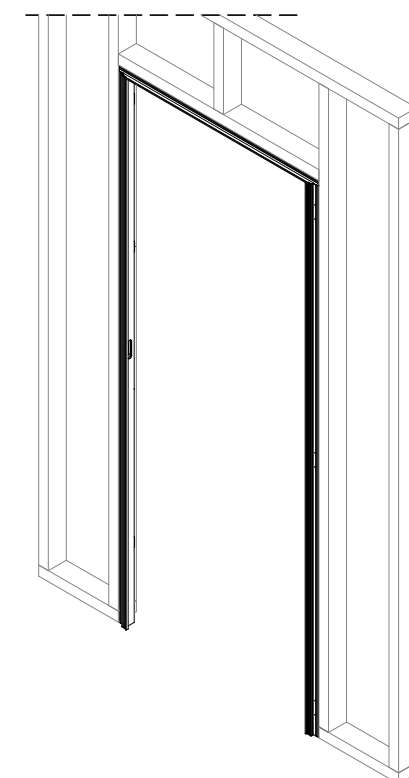
PUSH



PULL



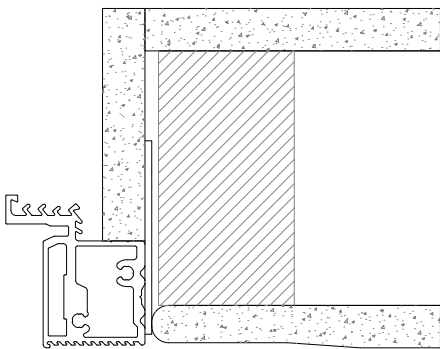
PUSH



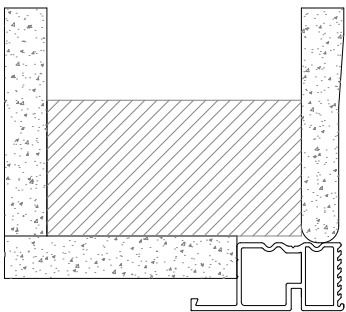
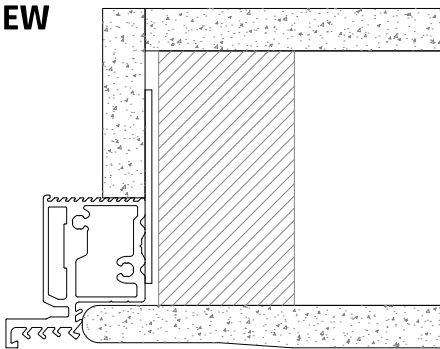
Install the plasterboard.

PULL

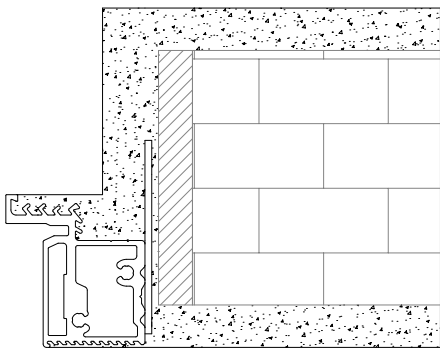
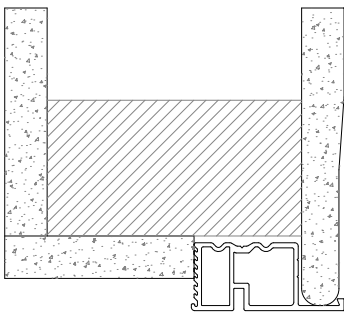
PUSH



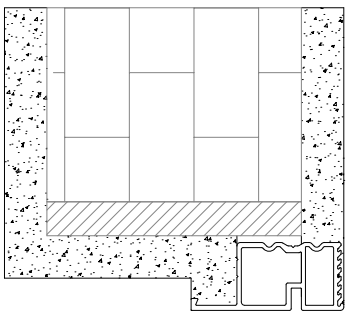
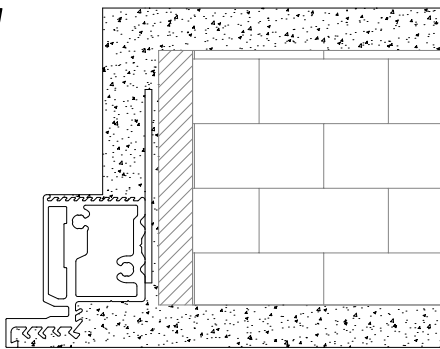
PLASTERBOARD TOP VIEW



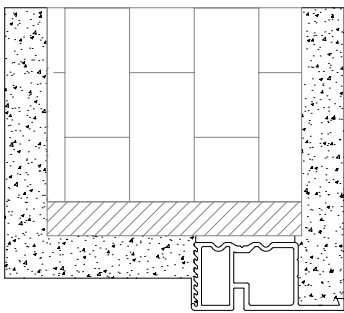
PLASTERBOARD SIDE VIEW



MASONRY TOP VIEW



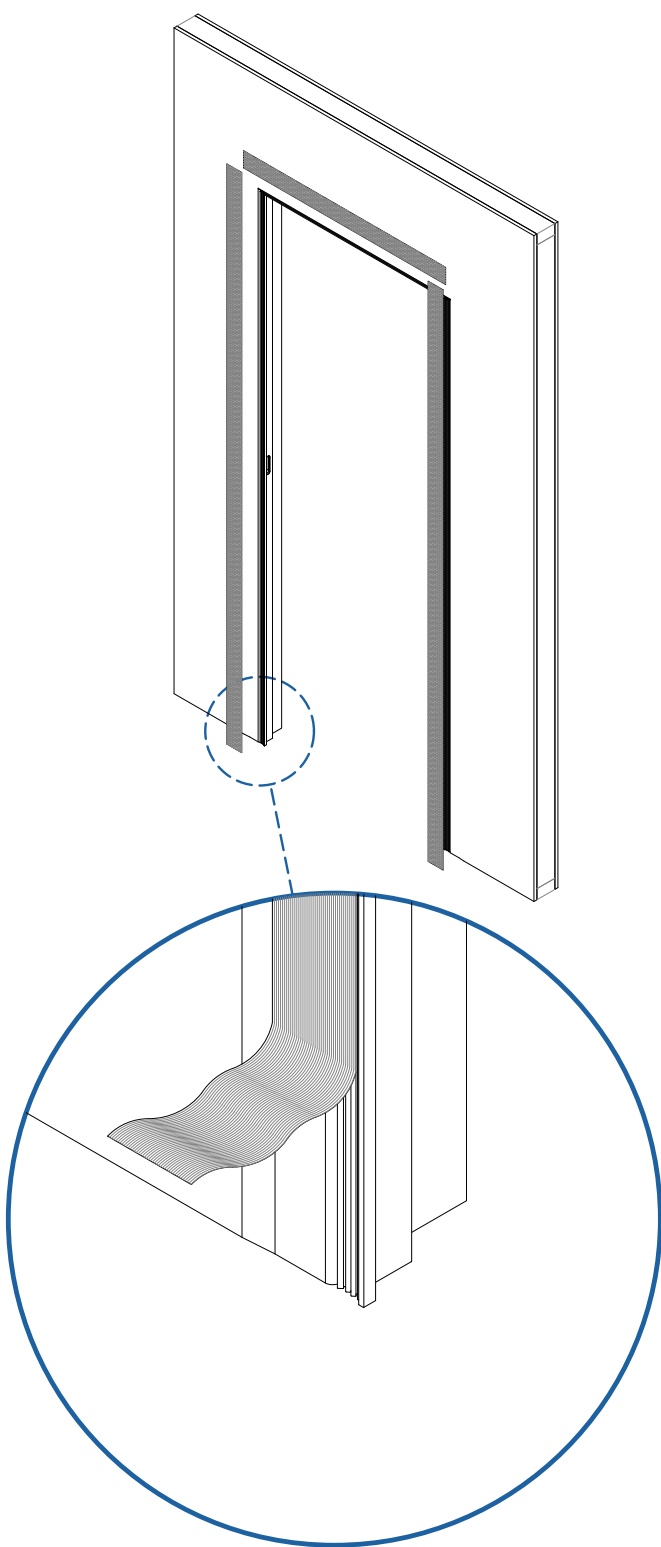
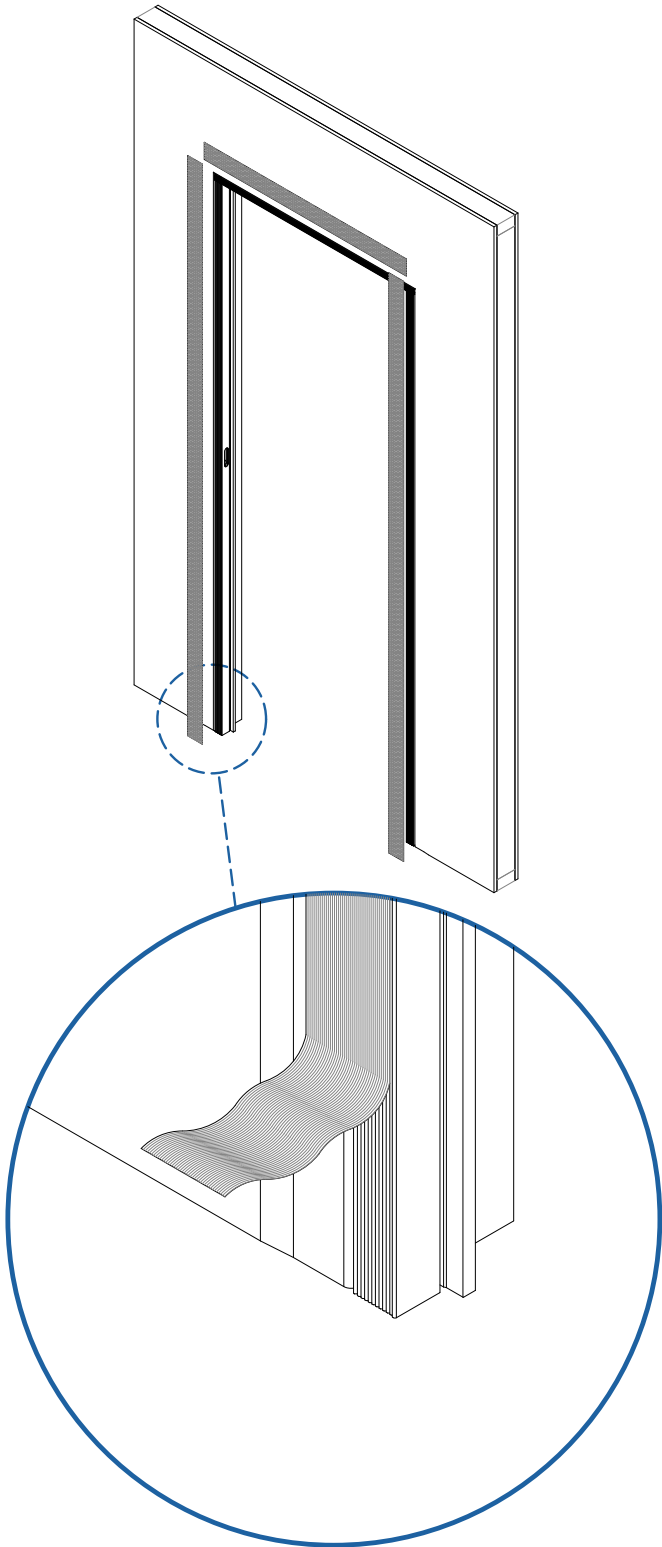
MASONRY SIDE VIEW



Apply fiberglass tape inbetween the frame and plasteboard, before plastering.

PULL

PUSH

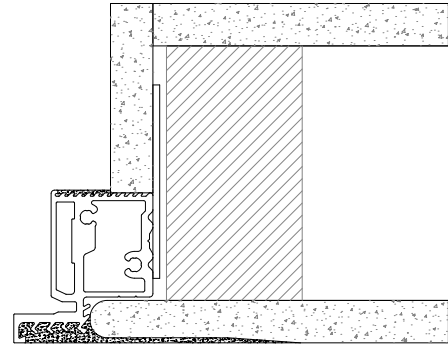
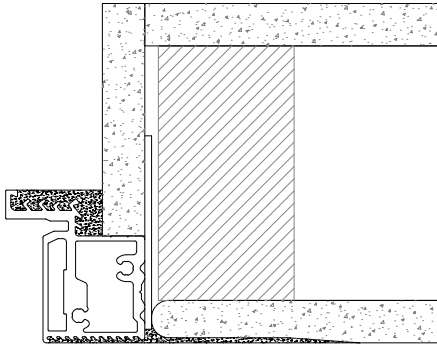


Plaster as shown below

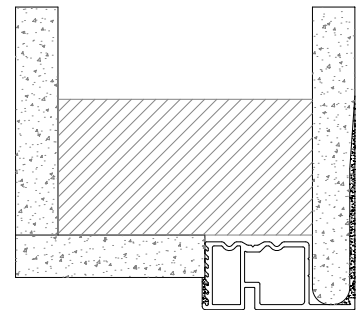
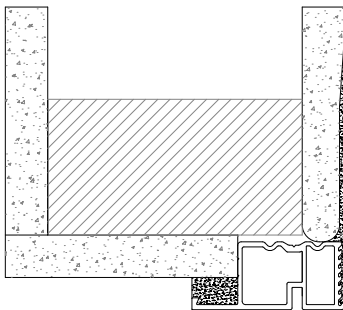
PULL

PUSH

TOP VIEW



SIDE VIEW



Painting

Sand the frame
to improve the paint's hold
(not mandatory)

TOP VIEW

SIDE VIEW

